

Comparisons

Sabrina



George Bellows, *Pennsylvania Excavation*, 1907
Charles Ginner, *From a Hampstead Window*, 1923
Sabrina





Sloan, *Shine, Washington Square*, 1923

Walter Sickert, *The Laundry Shop*, 1885

Sabrina

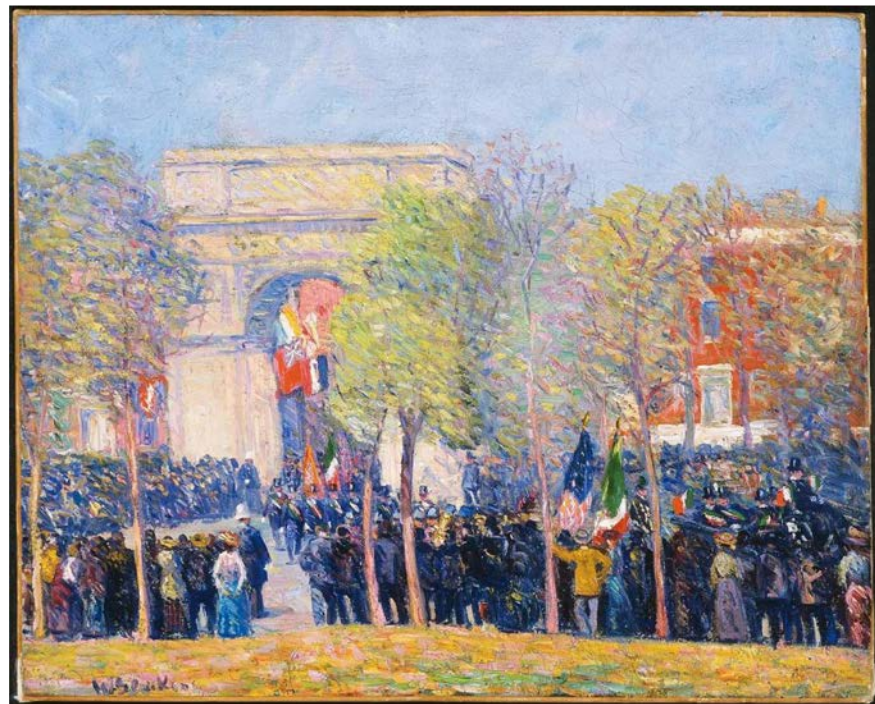




Sloan, *Shine, Washington Square*, 1923

William Glackens, *Italo-American Celebration*, c.1912

Sabrina (this is not an ASHCAN/Camden comparison but still interesting)





Luks, Knitting for the Soldiers, 1918
Ginner, The Filling Factory, c. 1916/18



Sydney



Harold Gilman, *The Thames at Battersea*, 1907, oil on canvas, 60 x 90.5 cm, Kirkcaldy Galleries



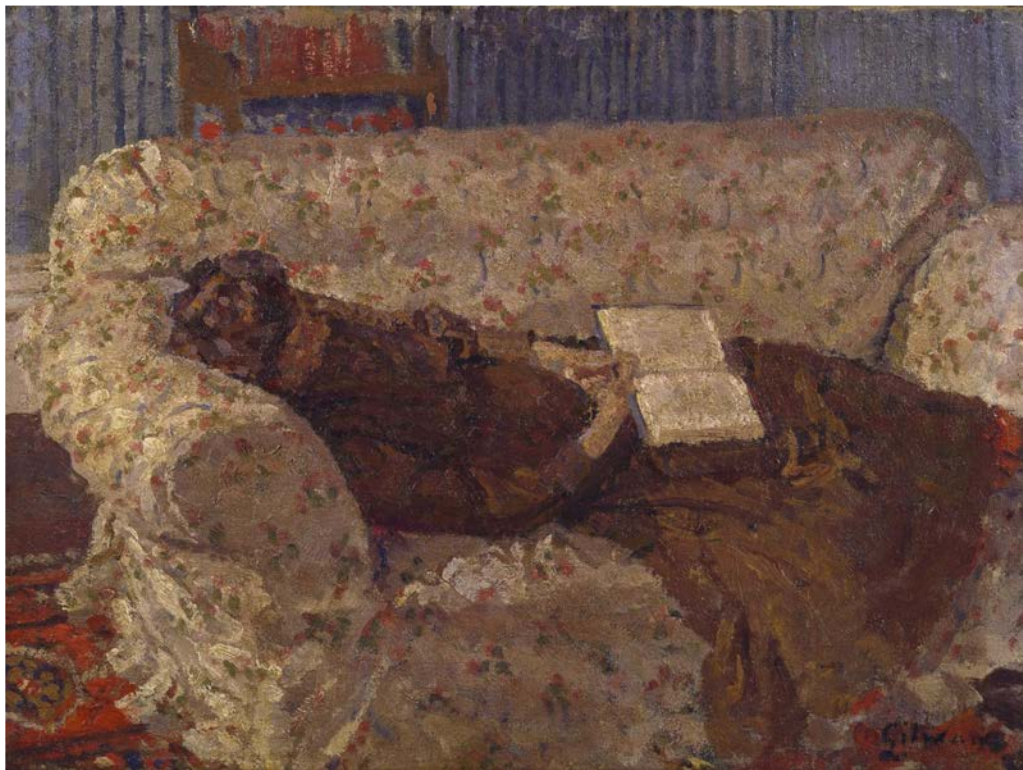
George Bellows, *Pennsylvania Excavation*, 1907, oil on canvas, 33 $\frac{7}{8}$ x 44 in, Smith College Museum of Art



Spencer Gore, *Conversation Piece and Self Portrait*, c. 1910, oil on board, 32 x 38 cm, Scotland Gallery of Modern Art



John Sloan, *Sunday Afternoon in Union Square*, 1912, oil on canvas, 26 1/8 x 32 1/8 in, BCMA



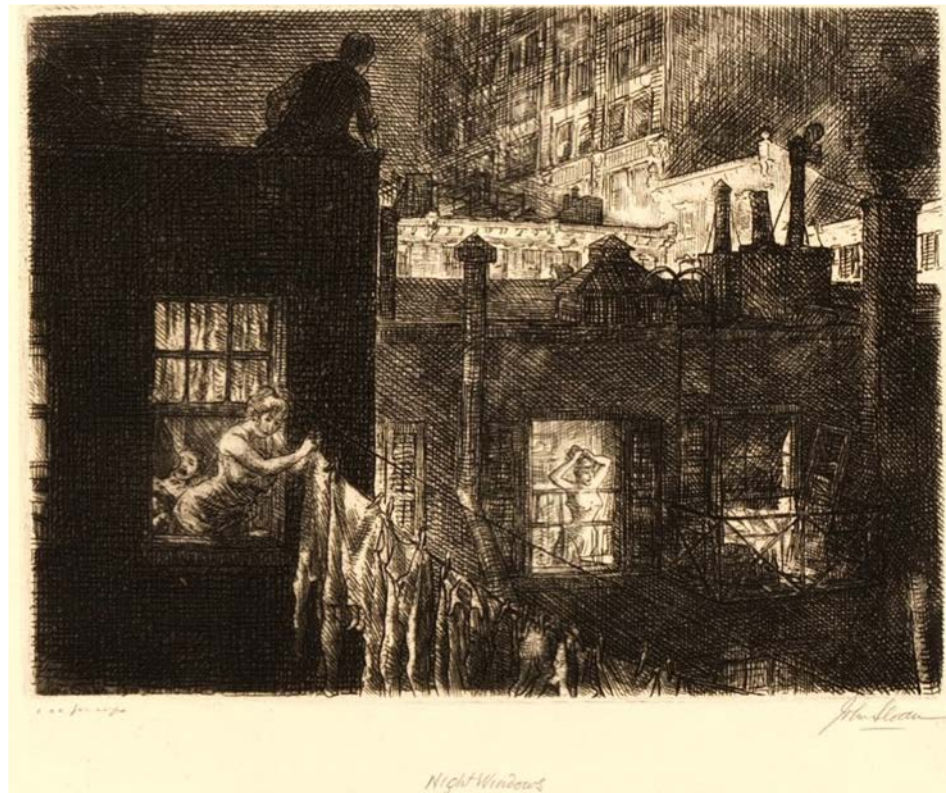
Harold Gilman, *Lady on a Sofa*, c. 1910, oil on canvas, 30.5 x 40.6 cm, Tate



John Sloan, *Reading in the Subway*, 1926, etching, 4 15/16 x 3 7/8 in, Metropolitan Museum of Art



Walter Sickert, *Suspense*, 1916, oil on canvas, 76.5 x 59 cm, Ulster Museum, Belfast, Ireland



John Sloan, *Night Windows*, 1910, etching, 5 1/8 x 6 13/16 in, Metropolitan Museum of Art



Walter Sickert, *The Laundry Shop*, 1885, oil on wood, 38.7 x 24.7 cm, Leeds Art Gallery



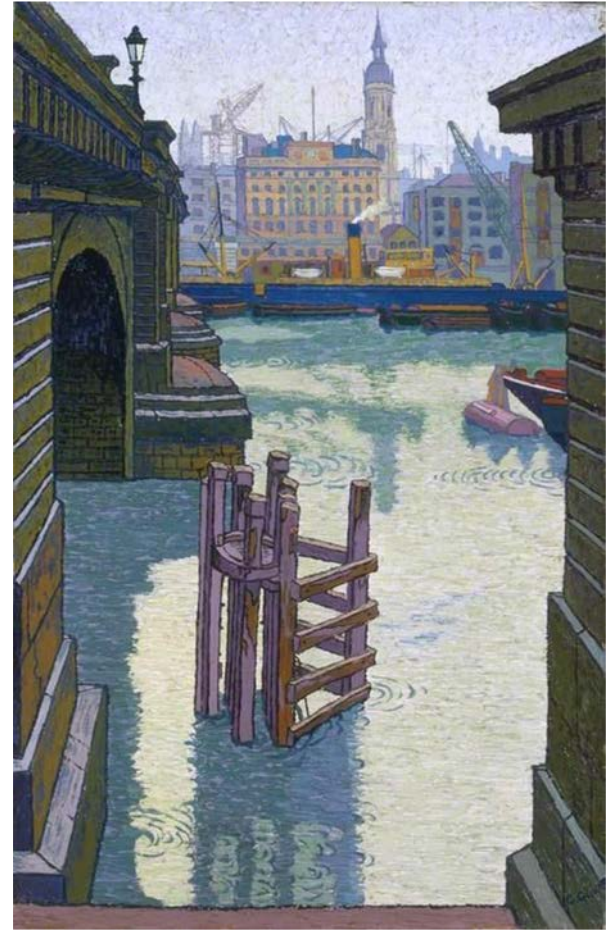
George Luks, *The Butcher Cart*, 1901, oil on canvas, 22 x 27 in, The Art Institute of Chicago

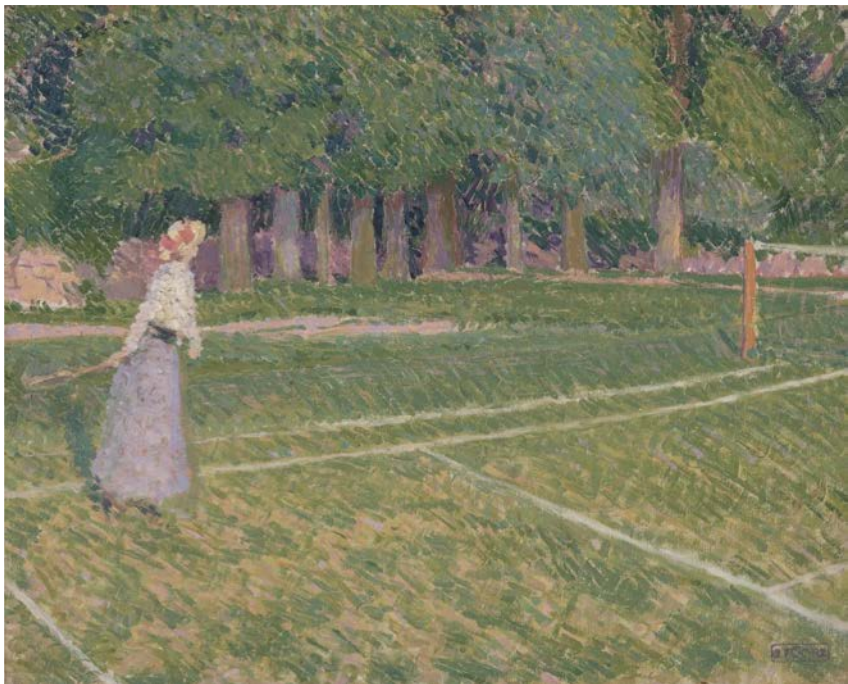
Ramiro



George Bellows, *Blue Morning*, 1909. Oil on canvas

Charles Ginner, *London Bridge: Adelaide House and Fresh Wharf, London*, 1913 O/C





Spencer Gore, *Tennis at Hertingfordbury*, 1910, O/C



George Bellows, *Tennis at Newport*, 1919, O/C



John Sloan, *Signals*, 1916, O/C

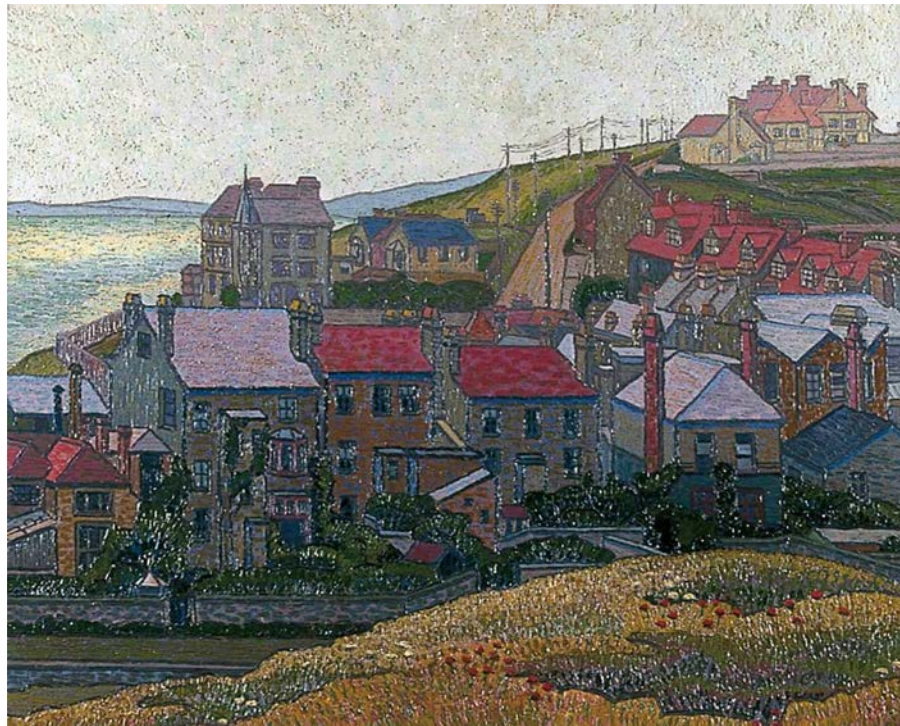


Charles Ginner, *Rottingdean*, 1914
O/C



Robert Henri, *Coal Breaker*, 1902,
O/C

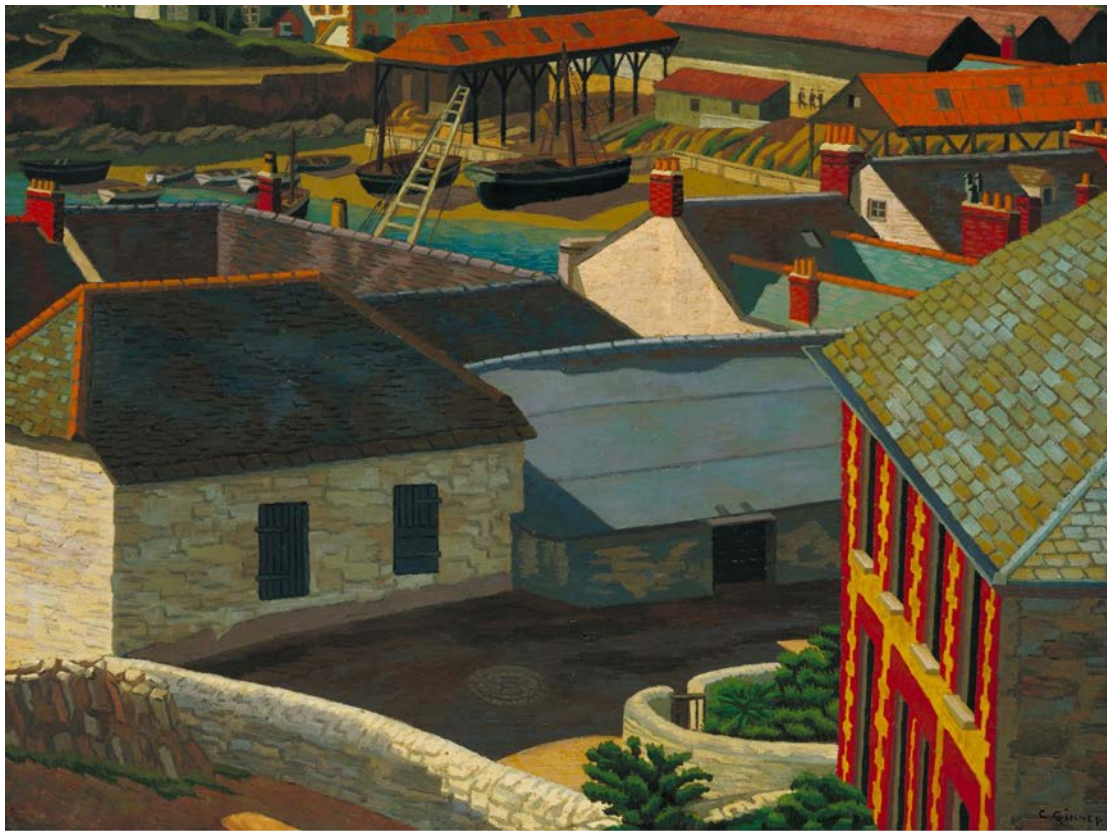
Charles Ginner, *Rottingdean*, 1914
O/C



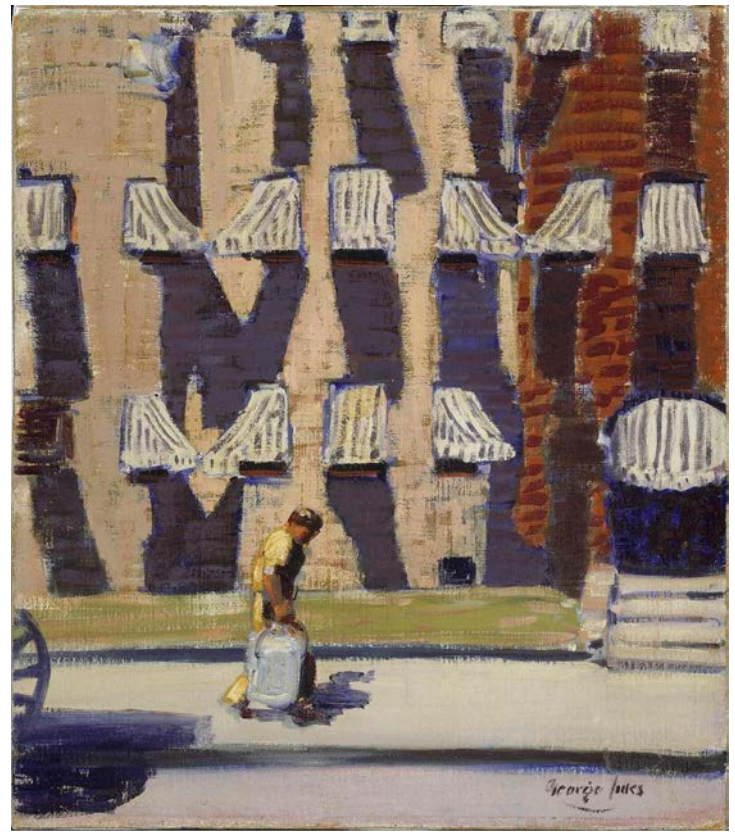
Emily



George Luks, *Knitting for the Soldiers, High Bridge Park*, 1918, o/c, private collection
George Bellows, *The Murder of Edith Cavell*, 1918, Lithograph, Colby College Museum



Charles Ginner, *Porthleven*, 1922, o/c, Tate



George Luks, *Noontime, St. Botolph Street, Boston*, 1923, o/c, Museum Fine Arts Boston



John Sloan, *Sunday Afternoon in Union Square*, 1912, oil on canvas, 66.04 x 81.28 cm, BCMA

John Sloan, *Chinese Restaurant*, 1909, oil on canvas, 66.04 x 81.28 cm, University of Rochester Art Gallery

Holly

George Bellows, *Blue Morning*, 1909. Oil on canvas, 34 x 44 in. National Gallery of Art, Washington, D.C., Chester Dale Collection.



Spencer Gore, 1913. *From a Canal Bridge, Chalk Farm Road*, oil on canvas, H 43.3 x W 68.6 cm, York Art Gallery.





Left: William Glackens, *At Mouquin's*, 1905. Oil on canvas, 122.4 x 92.1 cm, Art Institute of Chicago.



Right: Walter Sickert, *Ennui*, 1914. Oil on canvas, 122.4 x 92.1 cm, Tate Modern.



Left
190
can
Art.



A Marengo, 1903-4.
l on canvas, Tate.

Elisha



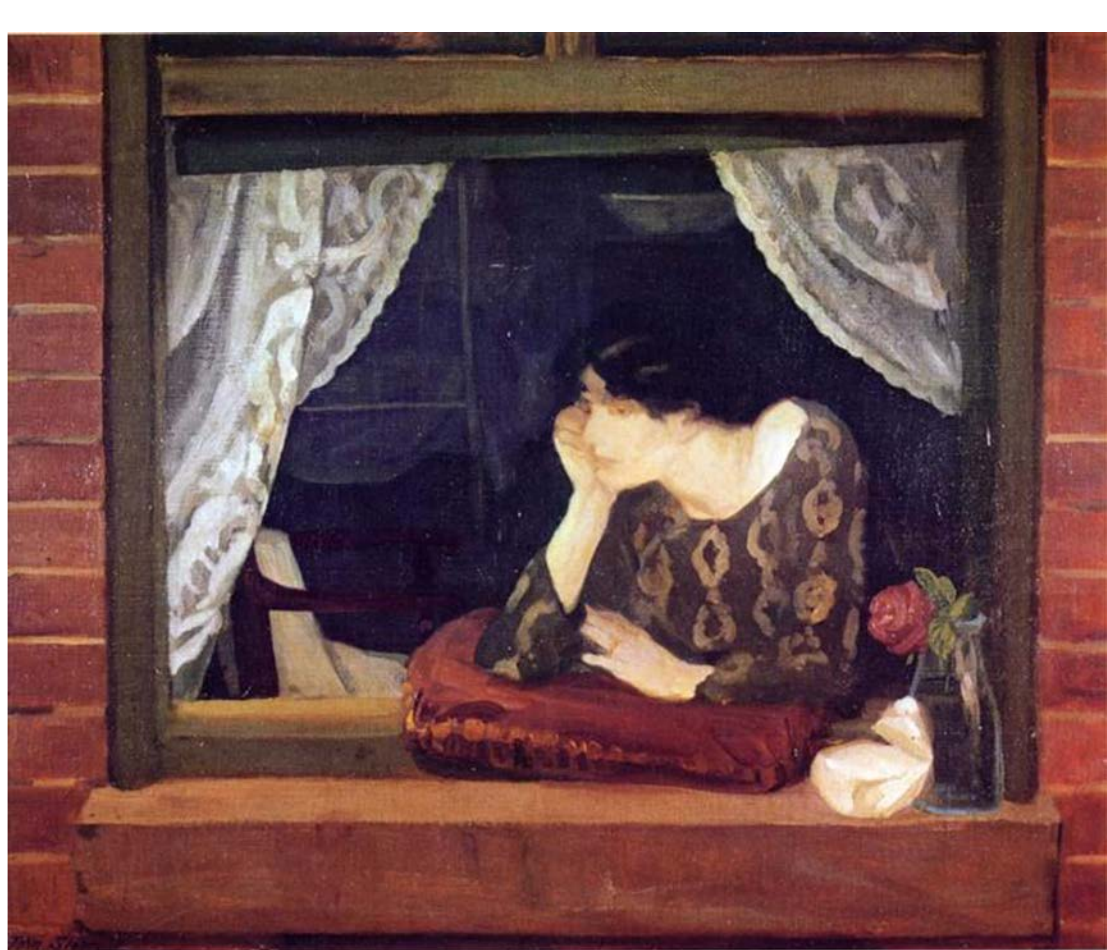
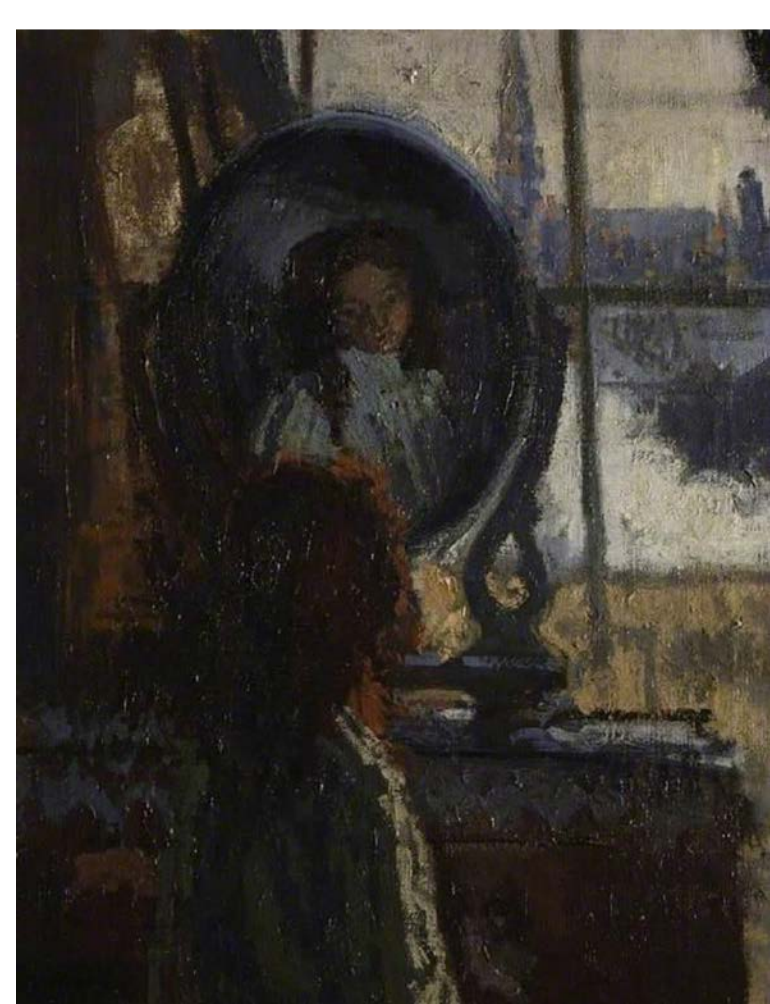


Plate 17. *A Window on the Street*. 1912. Oil on canvas, 26" x 32". The Bowdoin



Harrison



George Luks.
King's Chapel,
Boston. 1923.
MFA. 92.4 x
76.5.



Walter Sickert. The
Front at Hove. 1930.
Tate. 6.3 x 7.6 cm.

John Sloan,
easter eve.
Etching. The
met



Walter Sickert. The
Facade, St Jacques,
Dieppe. 1899. The
Whitworth. 53.8 x
45.3 cm.

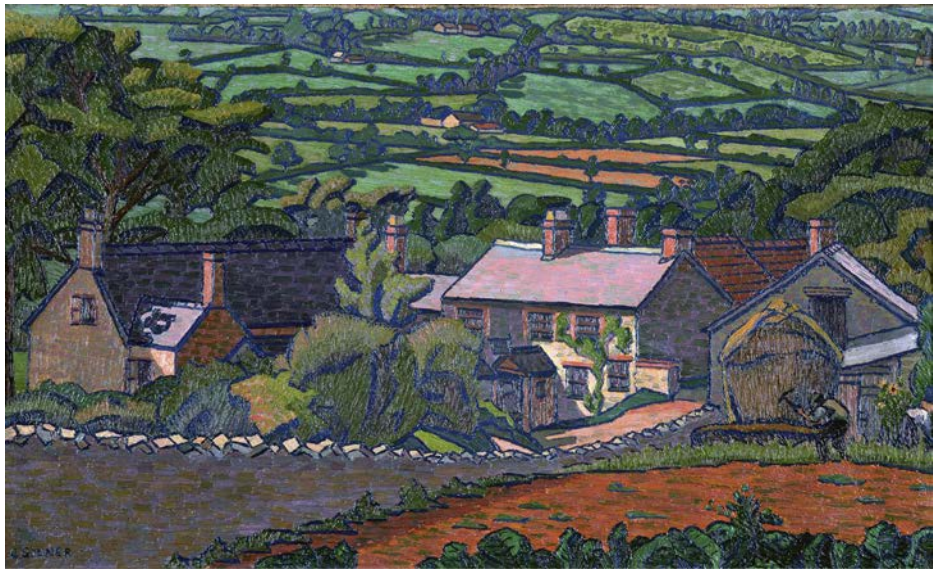




John Sloan. *Easter Eve*. 1907. 81.3 x 66 cm. Private Collection



Walter Sickert. *O Nuit d'Amour*. 1922. 90.2 x 69.8. Manchester Art Gallery



Charles Ginner. Clayhidon. 1913.
Royal Albert Memorial Museum, Exeter.



George Bellows. Easter Snow. 1915. Cordover
Collection. 86.4 x 114.3 cm.

Prof. Fletcher

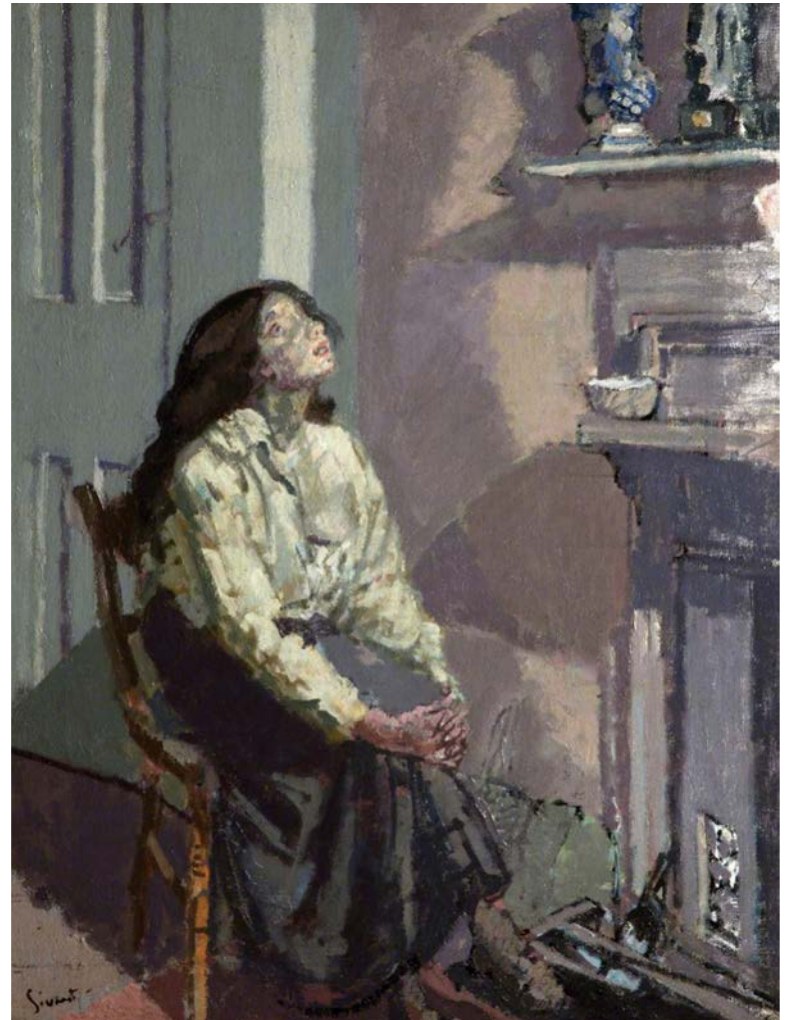


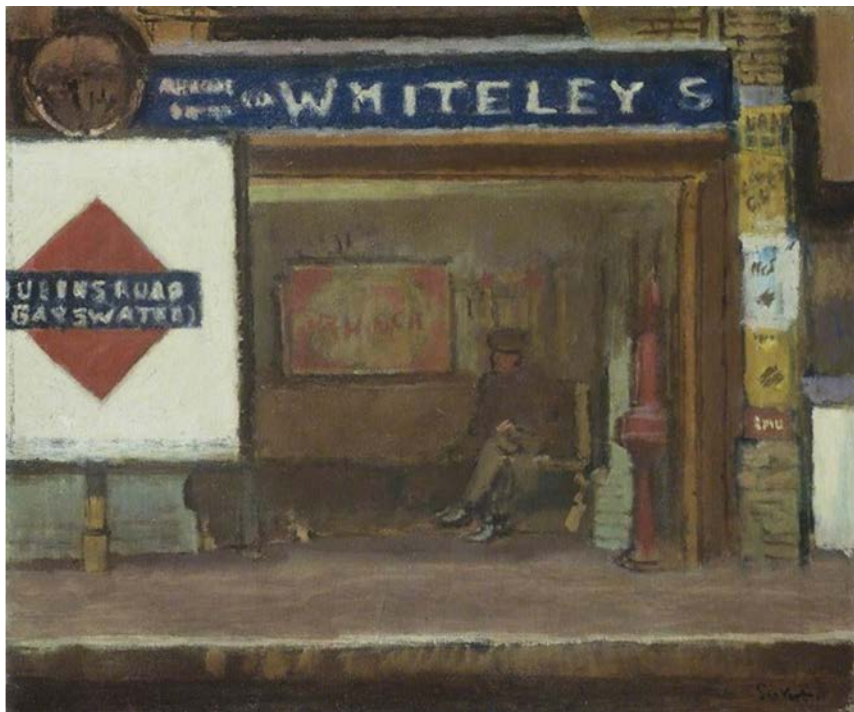
Sloan, A Window on the Street, 1912
Sickert, Ennui, 1914
Pamela Fletcher





Sloan, A Window on the Street, 1912
Sickert, Suspense
Pamela Fletcher





Sickert, Queen's Road Station, 1916
Sloan, A Window on the Street, 1912
Pamela Fletcher



